

INDUSTRY

RESEARCH  
LABORATORY  
EDUCATION

DISTRIBUTION  
LOGISTICS

Economically.  
**Solid.**  
Wide variety.



The workplace system.

**BASIC.**

KARL original.



# **BASIC** is **universal applicable** and offers all options of a **modern workplace system**.

Modular design, flexibility and a consistent price-performance ratio characterizes the BASIC workplace system.

Characteristic of the clear and simple shape is the stable table frame made of square steel tube.





## Numerous table extension elements enable **ergonomic** and **functional** solutions.

A variety of well-thought-out building blocks that are based on daily practice turn BASIC into an open system for every task.

Production, assembly and laboratory.

Different table structures, roll containers, energy and media supply, and 19 "structures for the integration of measurement and testing technology offer flexible application options.





## Detailed **perfection.**

Stable base frame made of square steel tube, 35 x 35 mm.  
Large selection of modular equipment and accessories for ergonomic and functional workplace design.

Table structure for the adaptation of storage boards and / or table extension elements (Monitor holder, lighting, support rails for gripping trays etc.).  
Table top frame as a shelf or for the integration of 19"-racks for measuring and testing technologies.

Any special dimensions of table width and depth are also possible on request.



Optionally in ESD version according to IEC 61340-5-1

### Primary colors:



light gray  
RAL 7035



water blue  
RAL 5021

# BASIC

KARL original.


Content	Page
<b>Work table in standard design</b> .....	<b>7</b>
Work table in reinforced design .....	7
Mobile work table in reinforced design .....	8
Mounting set for corner table combinations .....	8
<b>Trolley</b> .....	<b>9</b>
<b>Table attachments</b> .....	<b>9</b>
Table top frame .....	9
Mounting adapter .....	10
Carrier rails for power strips .....	10
Cable tray .....	10
Freestanding ESD footrest .....	11
<b>Table construction</b> .....	<b>11</b>
Vertical struts .....	11
<b>19 inch technology for measurement and testing</b> .....	<b>12</b>
<b>Power connection rails</b> .....	<b>13</b>
Standardized power connection rail .....	13
Electrical connection strips for individual fitting with insert plates .....	14
Insert plates for electrical connection strips .....	14
Connection cable for electrical connection strips and lighting .....	16

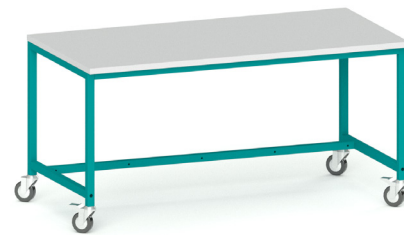
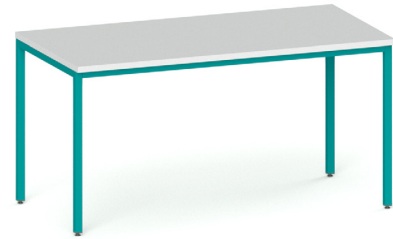
Content	Page
<b>Drawer units</b> .....	<b>18</b>
Single drawer .....	18
Drawer block F4 .....	18
Drawer block F1 .....	19
Drawer block F0 .....	19
Mobile drawer block F0 .....	19
<b>Equipment</b> .....	<b>20</b>
ESD insert tray for small parts .....	20
Variable cross and longitudinal divisions .....	20
<b>Chairs</b> .....	<b>21</b>
ESD-Chair Basic .....	21
ESD-Chair Sintec .....	21
ESD-Chair Neon .....	21

# Workdesk BASIC

- base made of sturdy square steel tube (35 x 35 mm)
- removable table legs
- table frame color: light gray (RAL 7035) or water blue (RAL 5021)
- table height: 780 mm

optional:

- height adjustable from 720 - 900 mm with clamping screws
- reinforcement frame
- mobile work table with 4 swivel castors
- ESD version with continuous conductive worktop,  
 grounding system with 2 push button connections (10 mm) and safety resistors according to IEC 61340-5-1
- all metal parts conductive powder coated



## Worktops

- light grey worktop (RAL 7035), 27 mm thickness
- all around with a resistant edge band
- worktop optionally in standard or ESD version, each with two different table covering variants
- surface slightly structured and glare-free
- resistant to organic solvents, weak acids and bases, petrol and oil

### Direct coated plate

- Melamine resin direct coating, limited abrasion and scratch resistance

### Hard laminate (EN 438)

- very hard and abrasion-resistant HPL laminate
- heat-resistant for a short time up to 180 ° C

### Direct coated ESD plate

- Melamine resin direct coating, limited abrasion and scratch resistance
- volume-conductive carrier plate
- Bleeder RA 1 x 104 to 1 x 109 ohms  
(dry measurement according to IEC 61340-5-1, 100 V)

### Conductive ESD Hard Laminate (EN 438)

- very hard and abrasion-resistant HPL laminate
- volume-conductive carrier plate
- Bleeder RA 1 x 104 to 1 x 109 ohm  
(dry measurement according to IEC 61340-5-1, 100 V)
- heat-resistant for a short time up to 180 ° C

## Work table in standard design

- frame made of sturdy square steel tube (35 x 35 mm)
- standard height: 780 mm
- working area can be loaded with a uniform load of 150 kg
- cover plate and intermediate shelf optionally in standard or ESD version, each with 2 different topping variants

optional:

height adjustable from 720 - 900 mm with clamping screws



width x depth	1200 x 800 mm		1600 x 800 mm		2000 x 1000 mm	
height	780 mm	adjustable	780 mm	adjustable	780 mm	adjustable

### Frame: light gray

#### Cover plate

directly coated	30.005.30	31.005.30	30.025.30	31.025.30	30.045.30	31.045.30
Hard laminate	30.005.63	31.005.63	30.025.63	31.025.63	30.045.63	31.045.63
directly coated, ESD	30.005.34	31.005.34	30.025.34	31.025.34	30.045.34	31.045.34
ESD-Hard laminate	30.005.66	31.005.66	30.025.66	31.025.66	30.045.66	31.045.66

### Frame: water blue

#### Cover plate

directly coated	30.005.31	31.005.31	30.025.31	31.025.31	30.045.31	31.045.31
Hard laminate	30.005.47	31.005.47	30.025.47	31.025.47	30.045.47	31.045.47
directly coated, ESD	30.005.35	31.005.35	30.025.35	31.025.35	30.045.35	31.045.35
ESD-Hard laminate	30.005.48	31.005.48	30.025.48	31.025.48	30.045.48	31.045.48

## Work table in reinforced design

- table frame made of sturdy square steel tube (35 x 35 mm) with reinforcement frame
- standard height: 780 mm
- working area can be loaded with a uniform load of 200 kg
- cover plate and intermediate shelf optionally in standard or ESD version, each with 2 different topping variants

optional:

height adjustable from 720 - 900 mm with clamping screws



width x depth	1200 x 800 mm		1600 x 800 mm		2000 x 1000 mm	
height	780 mm	adjustable	780 mm	adjustable	780 mm	adjustable

### Frame: light gray

#### Cover plate

directly coated	30.105.30	31.105.30	30.125.30	31.125.30	30.145.30	31.145.30
Hard laminate	30.105.63	31.105.63	30.125.63	31.125.63	30.145.63	31.145.63
directly coated, ESD	30.105.34	31.105.34	30.125.34	31.125.34	30.145.34	31.145.34
ESD-Hard laminate	30.105.66	31.105.66	30.125.66	31.125.66	30.145.66	31.145.66

### Frame: water blue

#### Cover plate

directly coated	30.105.31	31.105.31	30.125.31	31.125.31	30.145.31	31.145.31
Hard laminate	30.105.47	31.105.47	30.125.47	31.125.47	30.145.47	31.145.47
directly coated, ESD	30.105.35	31.105.35	30.125.35	31.125.35	30.145.35	31.145.35
ESD-Hard laminate	30.105.48	31.105.48	30.125.48	31.125.48	30.145.48	31.145.48



## Mobile work table in reinforced design

- table frame made of sturdy square steel tube (35 x 35 mm) with reinforcement frame
- standard height: 780 mm
- 4 swivel castors (Ø 100 mm), 2 swivel castors lockable
- working area can be loaded with a uniform load of 200 kg
- cover plate and intermediate shelf optionally in standard or ESD version, each with 2 different topping variants

optional:  
height adjustable from 720 - 900 mm with clamping screws



width x depth	1200 x 800 mm		1600 x 800 mm		2000 x 1000 mm	
height	780 mm	adjustable	780 mm	adjustable	780 mm	adjustable

### Frame: light gray

#### Cover plate

directly coated	30.205.30	31.205.30	30.225.30	31.225.30	30.245.30	31.245.30
Hard laminate	30.205.63	31.205.63	30.225.63	31.225.63	30.245.63	31.245.63
directly coated, ESD	30.205.34	31.205.34	30.225.34	31.225.34	30.245.34	31.245.34
ESD-Hard laminate	30.205.66	31.205.66	30.225.66	31.225.66	30.245.66	31.245.66

### Frame: water blue

#### Cover plate

directly coated	30.205.31	31.205.31	30.225.31	31.225.31	30.245.31	31.245.31
Hard laminate	30.205.47	31.205.47	30.225.47	31.225.47	30.245.47	31.245.47
directly coated, ESD	30.205.35	31.205.35	30.225.35	31.225.35	30.245.35	31.245.35
ESD-Hard laminate	30.205.48	31.205.48	30.225.48	31.225.48	30.245.48	31.245.48

## Intermediate shelf

width x depth	1200 x 400 mm	1600 x 400 mm	2000 x 400 mm
directly coated	30.290.86	30.294.86	30.298.86
Hard laminate	30.290.88	30.294.88	30.298.88
directly coated, ESD	30.290.87	30.294.87	30.298.87
ESD-Hard laminate	30.290.89	30.294.89	30.298.89

## Mounting set for corner table combinations

- for connecting BASIC tables across corners
- the corner table leg can be omitted for optimum legroom
- extension table only possible with basic equipment

light gray	34.003.70
water blue	34.003.77





# Trolley

- frame made of sturdy square steel tube (35 x 35 mm)
- cover plate and intermediate shelf optionally in standard or ESD version, each with 2 different topping variants
- 4 swivel castors (Ø 100 mm), 2 swivel castors lockable
- W = 600 mm, D = 800 mm
- standard height: 780 mm



optional:  
height adjustable from 720 - 900 mm with clamping screws

	Frame light gray		Frame water blue	
height	780 mm	adjustable	780 mm	adjustable
Cover plate and intermediate shelf				
directly coated	32.505.30	31.505.30	32.505.31	31.505.31
Hard laminate	32.505.63	31.505.63	32.505.47	31.505.47
directly coated, ESD	32.505.34	31.505.34	32.505.35	31.505.35
ESD-hard laminate	32.505.66	31.505.66	32.505.48	31.505.48

# Table attachments

## Table top frame

- frame made of stable steel profile
- either with a cover plate or for mounting a 19" body for the inclusion of measuring and testing technology
- D = 400 mm, H = 400 mm
- attachment option for electrical connection strip or carrier rail for power strips



With cover plate			
table width	1200 mm	1600 mm	2000 mm
Frame: light gray			
directly coated	34.055.30	34.057.30	34.059.30
Hard laminate	34.055.63	34.057.63	34.059.63
directly coated, ESD	34.055.34	34.057.34	34.059.34
ESD-Hard laminate	34.055.66	34.057.66	34.059.66
Frame: water blue			
directly coated	34.055.31	34.057.31	34.059.31
Hard laminate	34.055.47	34.057.47	34.059.47
directly coated, ESD	34.055.35	34.057.35	34.059.35
ESD-Hard laminate	34.055.48	34.057.48	34.059.48
For assembling a 19" body			
table width	1200 mm	1600 mm	2000 mm
Frame: light gray	34.055.70	34.057.70	34.059.70
Frame: water blue	34.055.77	34.057.77	34.059.77

### Mounting adapter

- mounting on the back of the table frame
- for fastening an electrical connection strip or a support rail for power strips above the table top
- H = 200 mm

table width	1200 mm	1600 mm	2000 mm
	<b>34.335.70</b>	<b>34.337.70</b>	<b>34.339.70</b>



### Carrier rails for power strips

- for hanging in the rear wall of the table top frame or in the mounting adapter above the table top
- installation also possible on the back of the table below the table top
- D = 45 mm, H = 85 mm

#### For hanging on the table top frame

table width	1200 mm	1600 mm	2000 mm
	<b>54.104.70</b>	<b>54.107.70</b>	<b>54.109.70</b>

#### For hanging on the mounting adapter

table width	1200 mm	1600 mm	2000 mm
	<b>54.106.70</b>	<b>54.107.70</b>	<b>54.109.70</b>

#### Installation below the table top

table width	1200 mm	1600 mm	2000 mm
	<b>34.325.70</b>	<b>34.327.70</b>	<b>34.329.70</b>



### Equipment

5-way socket outlet with switch, power cord and Schuko plug	<b>95.005.98</b>
5-way power strip, Swiss version, with switch, power cord and plug	<b>95.004.98</b>

### Cable tray

- storage for power strips and cables
- D = 100 mm, H = 130 mm

table width	1200 mm	1600 mm	2000 mm
light gray	<b>34.525.70</b>	<b>34.527.70</b>	<b>34.529.70</b>
water blue	<b>34.525.77</b>	<b>34.527.77</b>	<b>34.529.77</b>



## Freestanding footrest holder

- frame made of sturdy square steel tube
- latches for height-adjustable hanging of the footrest
- H = 450 mm

52.315.70



## ESD footrest

- for hanging in the footrest holder or footrest pegs
- version according to DIN 33 406
- infinitely adjustable inclination via foot switch
- inserted, conductive ESD covering for the footrest
- W = 500 mm, D = 340 mm

ESD footrest

52.350.70

ESD grounding cable

52.355.98



## Table construction

### Vertical struts

- vertical struts for holding table construction and table extension elements from the SINTRO range
- stable rectangular steel tube with grid holes for mounting BASIC worktable 1600 and 2000 mm in reinforced design
- usable height of 1245 mm above table top
- including assembly set for attachment to table frame and reinforcement frame

Vertical strut

34.120.70



Detailed information about table top and add-on elements from the SINTRO range can be found in the special sales documents or in the KARL general catalog.

# 19 inch technology for measurement and testing

- stable wooden housing in standard or ESD version
- removable back wall with ventilation holes
- to accommodate measuring and testing technology according to DIN 41 494
- Grid profiles for fastening 19" subracks
- optionally with central cable harness for supplying power to the subracks
- for 3 HU or 6 HU subracks
- W = 1600 mm or 2000 mm, D = 400 mm
- H = 173 mm (3 HU) bzw. 307 mm (6 HU)



table width	1600 mm	2000 mm	1600 mm	2000 mm
height	3 HU	3 HU	6 HU	6 HU
suitable for	3 x 19"	4 x 19"	3 x 19"	4 x 19"

## without central wiring harness

standard	34.205.30	34.209.30	34.245.30	34.249.30
ESD version	34.205.34	34.209.34	34.245.34	34.249.34

## with central wiring harness, 1-phase

standard	34.225.30	34.229.30	34.265.30	34.269.30
ESD version	34.225.34	34.229.34	34.265.34	34.269.34

## with central wiring harness, 3-phase

standard	34.235.30	34.239.30	34.275.30	34.279.30
ESD version	34.235.34	34.239.34	34.275.34	34.279.34

## Equipment

3 m power cable with Schuko plug and WINSTA 3-pole socket	95.625.98
3 m power cable with Swiss plug and 3-pin WINSTA socket	95.627.98
3 m power cable with CEKON plug and 5-pin WINSTA socket	95.635.98

Detailed information about the KARL range of measurement and testing technology can be found in the special sales documents or in the KARL general catalog.



# Power connection rails



- stable sheet metal housing in the form of a parapet duct, H = 140 mm, D = 76 mm
- attachment to the table top frame or to the mounting adapter
- for individual fitting with insert plates
- the individual modules can be exchanged and expanded at any time
- WINSTA connector system for mains connection and further wiring

## Standardized electrical connection rail



- EMERGENCY STOP, circuit breaker, 5 safety sockets (D) or Swiss sockets (CH)

for table width 1200 mm	(D)	34.470.70
	(CH)	34.471.70
for table width 1600 mm	(D)	34.473.70
	(CH)	34.474.70
for table width 2000 mm	(D)	34.476.70
	(CH)	34.477.70



- EMERGENCY STOP, circuit breaker, FI 25 A / 30 mA 2-pole, 10 Schuko sockets (D) or Swiss sockets (CH)

for table width 1200 mm	(D)	34.480.70
	(CH)	34.481.70
for table width 1600 mm	(D)	34.483.70
	(CH)	34.484.70
for table width 2000 mm	(D)	34.486.70
	(CH)	34.487.70

## Electrical connection strips for individual fitting with insert plates



for table width 1200 mm (usable width for insert plates: 1000 mm)	<b>34.450.70</b>
for table width 1600 mm (usable width for insert plates: 1400 mm)	<b>34.453.70</b>
for table width 2000 mm (usable width for insert plates: 1800 mm)	<b>34.456.70</b>

## Insert plates for electrical connection strips

### Security modules

	Circuit breaker 10-16 A, undervoltage release, EMERGENCY STOP, 1 indicator light, 1-phase	400 mm	(D) (CH)	<b>95.365.70</b> <b>95.367.70</b>
	Circuit breaker 10-16 A, undervoltage release, EMERGENCY STOP, 3 indicator lights, 3-phase	400 mm	(D) (CH)	<b>95.370.70</b> <b>95.372.70</b>
	FI 25 A / 30 mA 2-pole, circuit breaker 10-16 A, undervoltage release, EMERGENCY STOP, 1 indicator light, 1-phase	400 mm	(D) (CH)	<b>95.355.70</b> <b>95.357.70</b>
	FI 25 A / 30 mA 4-pole, circuit breaker 10-16 A, undervoltage release, EMERGENCY STOP, 3 indicator lights, 3-phase	400 mm	(D) (CH)	<b>95.360.70</b> <b>95.362.70</b>
	EMERGENCY STOP in a separate housing, 3 m connection cable, circuit breaker 10-16 A Undervoltage release, 1 indicator light, 1-phase	400 mm	(D) (CH)	<b>95.307.70</b> <b>95.309.70</b>
	EMERGENCY STOP in a separate housing, 3 m connection cable, circuit breaker 10-16 A undervoltage release, 3 indicator lights, 3-phase	400 mm	(D) (CH)	<b>95.312.70</b> <b>95.314.70</b>
	EMERGENCY STOP, guided on plug connector	100 mm		<b>95.315.70</b>

### Switch

	ON / OFF 16 A 2-pole, rocker switch with indicator light	100 mm		<b>95.405.70</b>
--	--	--------	--	------------------

### Empty panels

	Empty plate	100 mm		<b>95.205.70</b>
	Empty plate	300 mm		<b>95.210.70</b>
	Empty plate with punching and pre-assembled flush-mounted box	100 mm		<b>95.206.70</b>
	Empty plate with main connection without switching module			
	1-phase	100 mm		<b>95.620.70</b>
	3-phase	300 mm		<b>95.630.70</b>




## Compressed air connection

	2 x Coupling box, size 3	100 mm	<b>95.545.70</b>
	2 x Coupling box, size 4	100 mm	<b>95.547.70</b>


## Sockets

	5 x Schuko socket	300 mm	<b>95.410.70</b>
	2 x Schuko socket	100 mm	<b>95.412.70</b>
	5 x Universal socket I, D, USA	300 mm	<b>95.420.70</b>
	5 x Swiss socket	300 mm	<b>95.415.70</b>
	5 x Schuko socket	red panel	<b>95.440.70</b>
	2 x Schuko socket	red panel	<b>95.442.70</b>
	5 x Universal socket I, D, USA	red panel	<b>95.444.70</b>
	5 x Swiss socket	red panel	<b>95.445.70</b>
	1 x Floating socket, isolating transformer 230 V / 1 A, breaker	300 mm	<b>95.430.70</b>
	1 x CEE 16 A 5-pin	100 mm	<b>95.435.70</b>
	5 Safety sockets, connected to L1, L2, L3, N, PE	100 mm	<b>95.450.70</b>

## Data and communication interfaces

	Universal connection RJ45, CAT 6, 2 terminals	100 mm	<b>95.527.70</b>
	2 Passage connector RJ45, CAT 6	100 mm	<b>95.530.70</b>
	9-pin SUB-D connector, insulation displacement connection	100 mm	<b>95.505.70</b>
	SUB-D socket 9-pin, insulation displacement connection	100 mm	<b>95.515.70</b>
	2 x Passage connector USB 2.0 Type A / B reversible	100 mm	<b>95.528.70</b>

## Adjustable DC voltage

	0 – 30 V / 0 – 1 A, 2 analog displays	500 mm	<b>95.705.70</b>
	0 – 30 V / 0 – 1 A, 2 digital displays	500 mm	<b>95.707.70</b>



## Connection cable for electrical connection strips and lighting

### Power supply

3 m power cable (3 x 1,5 mm <sup>2</sup> ) with Schuko plug (16 A), <i>WINSTA</i> 3-pole socket	<b>95.625.98</b>
3 m power cable (3 x 1,5 mm <sup>2</sup> ) with Swiss plug (10 A), <i>WINSTA</i> 3-pole socket	<b>95.627.98</b>
3 m power cable (5 x 2,5 mm <sup>2</sup> ) with CEE plug (16 A, 5-polig), <i>WINSTA</i> 5-pole socket	<b>95.635.98</b>
7 m power cable (3 x 1,5 mm <sup>2</sup> ) with Schuko plug (16 A), <i>WINSTA</i> 3-pole socket	<b>95.675.98</b>
7 m power cable (3 x 1,5 mm <sup>2</sup> ) with Swiss plug (10 A), <i>WINSTA</i> 3-pole socket	<b>95.674.98</b>
<i>WINSTA</i> 3-pole socket for on-site cable connection	<b>95.605.98</b>
<i>WINSTA</i> 5-pole socket for on-site cable connection	<b>95.607.98</b>
M-Fitting sets (1 x M 16, 1 x M 20, 1 x M 25) for on-site cable connection	<b>95.615.98</b>

### Extension and connection cables

2 m power cable (3 x 1,5 mm <sup>2</sup> ), <i>WINSTA</i> 3-pole connector, <i>WINSTA</i> -3-pole socket	<b>95.685.98</b>
3 m power cable (3 x 1,5 mm <sup>2</sup> ), <i>WINSTA</i> 3-pole connector, <i>WINSTA</i> -3-pole socket	<b>95.687.98</b>
4 m power cable (3 x 1,5 mm <sup>2</sup> ), <i>WINSTA</i> 3-pole connector, <i>WINSTA</i> -3-pole socket	<b>95.689.98</b>
2 m power cable (5 x 2,5 mm <sup>2</sup> ), <i>WINSTA</i> 5-pole connector, <i>WINSTA</i> -5-pole socket	<b>95.695.98</b>
3 m power cable (5 x 2,5 mm <sup>2</sup> ), <i>WINSTA</i> 5-pole connector, <i>WINSTA</i> -5-pole socket	<b>95.697.98</b>
4 m power cable (5 x 2,5 mm <sup>2</sup> ), <i>WINSTA</i> 5-pole connector, <i>WINSTA</i> -5-pole socket	<b>95.699.98</b>
5 m patch cable RJ45; Plug 1 x angled, 1 x straight	<b>80.926.98</b>

For connecting further electrical workstation components

WINSTA-3-pole snap-in socket including internal wiring to the main switch module	95.645.98
WINSTA-5-pin snap-in socket including internal wiring to the main switch module	95.655.98
WINSTA-3-pole snap-in socket including internal wiring in front of the main switch module	95.647.98
WINSTA-5-pole snap-in socket including internal wiring in front of the main switch module	95.657.98
AC distribution - 1 x 3-pin WINSTA plug to 3 x 3-pin WINSTA socket	95.600.98
AC distribution - 1 x 3-pin WINSTA plug to 5 x 3-pin WINSTA socket	95.602.98
AC distribution - 1 x 5-pin WINSTA plug to 3 x 5-pin WINSTA socket	95.604.98
WINSTA-3-pole snap-in connector, including internal wiring for separate IT network	95.650.98

EMERGENCY STOP

Room EMERGENCY STOP set (additional break contact for on-site room EMERGENCY STOP loop)	95.300.98
Coupling of 2 EMERGENCY STOP (2 additional NC contacts including wiring)	95.301.98

Technical specifications

- maximum connected load without internal protection: 16 A / 230 V bzw. 16 A / 400 V
- maximum connected load with internal protection: 25 A / 230 V bzw. 25 A / 400 V
- operating current of the circuit breaker: 16 A (AC-3)
- maximum supply cross-section with internal protection: 4 mm<sup>2</sup>
- cable cross sections without internal protection: 3 x 1,5 mm<sup>2</sup> with alternating current  
5 x 2,5 mm<sup>2</sup> at three-phase current

# Drawer units



- robust sheet steel case with central locking
- 4 cabinet heights, 2 widths
- variable drawer divisions (1 HU = 54 mm)
- clear internal dimensions: W = 330 mm respectively 520 mm, D = 450 mm
- 4/5-extensible, drawer runners with steel ball bearings
- load capacity / drawer: 30 kg
- ESD-compliant due to conductive powder coating and conductive guides, connection of all parts with contact washers
- pull-out protection: only one drawer can be opened at a time

Optional:

- full extension drawers, drawer runners with telescopic rails
- load capacity / drawer: 45 kg

## Single Drawer

- with single locking
- several individual drawers can be installed one below the other
- H = 110 mm, D = 540 mm



Drawer division	1 x 2 HU
W = 418 mm	<b>32.405.70</b>

## Drawer block F4

- H = 313 mm
- D = 540 mm



Drawer division	4 x 1 HU	2 x 1 HU 1 x 2 HU	2 x 2 HU
W = 418 mm	<b>32.005.70</b>	<b>32.010.70</b>	<b>32.015.70</b>
W = 606 mm	<b>33.005.70</b>	<b>33.010.70</b>	<b>33.015.70</b>

## Drawer block F1

- H = 475 mm
- D = 540 mm



Drawer division	7 x 1 HU	2 x 1 HU 1 x 2 HU 1 x 3 HU	1 x 1 HU 3 x 2 HU	1 x 1 HU 2 x 3 HU	1 x 1 HU 1 x 6 HU
W = 418 mm	32.105.70	32.110.70	32.115.70	32.120.70	32.125.70
W = 606 mm	33.105.70	33.110.70	33.115.70	33.120.70	33.125.70

## Drawer block F0

- H = 583 mm
- D = 540 mm



Drawer division	9 x 1 HU	2 x 1 HU 2 x 2 HU 1 x 3 HU	1 x 1 HU 4 x 2 HU	1 x 1 HU 1 x 2 HU 1 x 6 HU	3 x 3 HU
W = 418 mm	32.205.70	32.210.70	32.215.70	32.220.70	32.225.70
W = 606 mm	33.205.70	33.210.70	33.215.70	33.220.70	33.225.70

## Mobile drawer block F0

- 4 conductive castors (Ø 52 mm)
- 2 of them lockable
- H = 670 mm
- D = 540 mm



Drawer division	9 x 1 HU	2 x 1 HU 2 x 2 HU 1 x 3 HU	1 x 1 HU 4 x 2 HU	1 x 1 HU 1 x 2 HU 1 x 6 HU	3 x 3 HU
-----------------	----------	----------------------------------	----------------------	----------------------------------	----------

### Cover directly coated

W = 418 mm	32.305.30	32.310.30	32.315.30	32.320.30	32.325.30
W = 606 mm	33.305.30	33.310.30	33.315.30	33.320.30	33.325.30

### Cover hard laminate

W = 418 mm	32.305.63	32.310.63	32.315.63	32.320.63	32.325.63
W = 606 mm	33.305.63	33.310.63	33.315.63	33.320.63	33.325.63

### Cover directly coated, ESD

W = 418 mm	32.305.34	32.310.34	32.315.34	32.320.34	32.325.34
W = 606 mm	33.305.34	33.310.34	33.315.34	33.320.34	33.325.34

### Cover ESD hard laminate

W = 418 mm	32.305.66	32.310.66	32.315.66	32.320.66	32.325.66
W = 606 mm	33.305.66	33.310.66	33.315.66	33.320.66	33.325.66

# Equipment

## ESD insert tray for small parts

- made of conductive plastic
- 2 trays can be used per drawer
- H = 31 mm

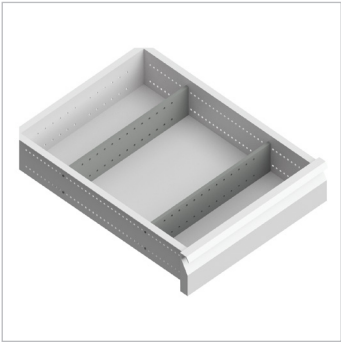
insert tray with 7 compartments for W = 418 mm	96.205.98
insert tray with 11 compartments for W = 606 mm	96.206.98



## Variable cross and longitudinal divisions

- adjustable in grid
- made of powder-coated sheet steel
- H = 73 mm

Cross dividers, W = 330 mm	96.225.98
Cross dividers, W = 540 mm	96.226.98



Longitudinal divisions, 303 mm / A4 landscape	96.227.98
Longitudinal divisions, 213 mm / A5 landscape	96.229.98
Longitudinal divisions, 113 mm / A6 landscape	96.231.98



# Chairs

## Basic ESD chair

- height adjustable from 470 to 610 mm
- according to IEC 61340-5-1
- height-adjustable permanent contact backrest
- base with conductive, load-dependent braked double castors
- durable, conductive fabric cover
- steel and plastic parts light grey

Basic ESD work chair, blue upholstery	<b>96.137.98</b>
Basic ESD work chair, grey upholstery	<b>96.139.98</b>
Armrests, light grey	<b>96.185.98</b>



## ESD chair Sintec

- height adjustable from 430 to 580 mm
- according to IEC 61340-5-1
- height-adjustable permanent contact backrest
- base with conductive, load-dependent braked double castors
- backrest and seat made of volume conductive plastic
- steel and plastic parts black, upholstery optional

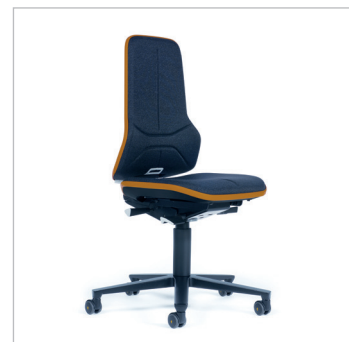
ESD work chair Sintec	<b>96.130.98</b>
ESD textil upholstery	<b>96.134.98</b>
ESD integral foam pad	<b>96.135.98</b>



## ESD chair Neon

- height adjustable from 450 to 620 mm
- according to IEC 61340-5-1
- height-adjustable backrest
- seat depth and seat tilt adjustment
- base with conductive, load-dependent braked double castors
- optional: permanent contact backrest or synchronous technology
- chair element and black base, grey flexible band
- upholstery elements configurable and quickly exchangeable

ESD work chair Neon with permanent contact backrest	<b>96.140.98</b>
ESD work chair Neon with synchronous technology	<b>96.142.98</b>
ESD textile upholstery, black	<b>96.144.98</b>
ESD integral foam pad, black	<b>96.146.98</b>



**Additional chairs on request**

# The **KARL-product range.**

Optimal solutions require a precise analysis of the work processes.  
KARL defines itself as a system supplier for modern, ergonomic workplace design.

The intensive cooperation and the qualified dialogue with our customers is the basis  
for a tailor-made solution for your task.

We also take production-specific requirements and spatial conditions  
like the individual needs of each employee into account.

We visualize functionality, ergonomics, handling and implementation of the spatial specifications  
in a three-dimensional layout.



## **QUADRO.**

The workplace system for the highest demands.



## **QUADRO twin.**

The classic table system with all options.



## **SINTRO.**

The variable assembly workstation.



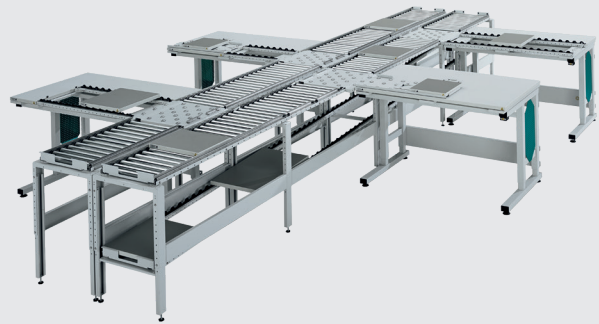
## **SINTRO pack.**

The solution for packing stations.





**BASIC.** The economic workplace system.



**Transfer systems.**



**FIFO shelves.** The flexible material feed.



**Deployment shelves.**



**Cupboard and shelf systems.**



**Measuring and testing technology.**

Ergonomics.  
**Functionality.**  
 Custom design.



Andreas KARL GmbH & Co. KG | Hauptstraße 26 | 85777 Fahrenzhausen | Germany  
Phone: +49 8133 17-0 | Fax: +49 8133 17-11 | E-Mail: [info@karl.eu](mailto:info@karl.eu) | [www.karl.eu](http://www.karl.eu)